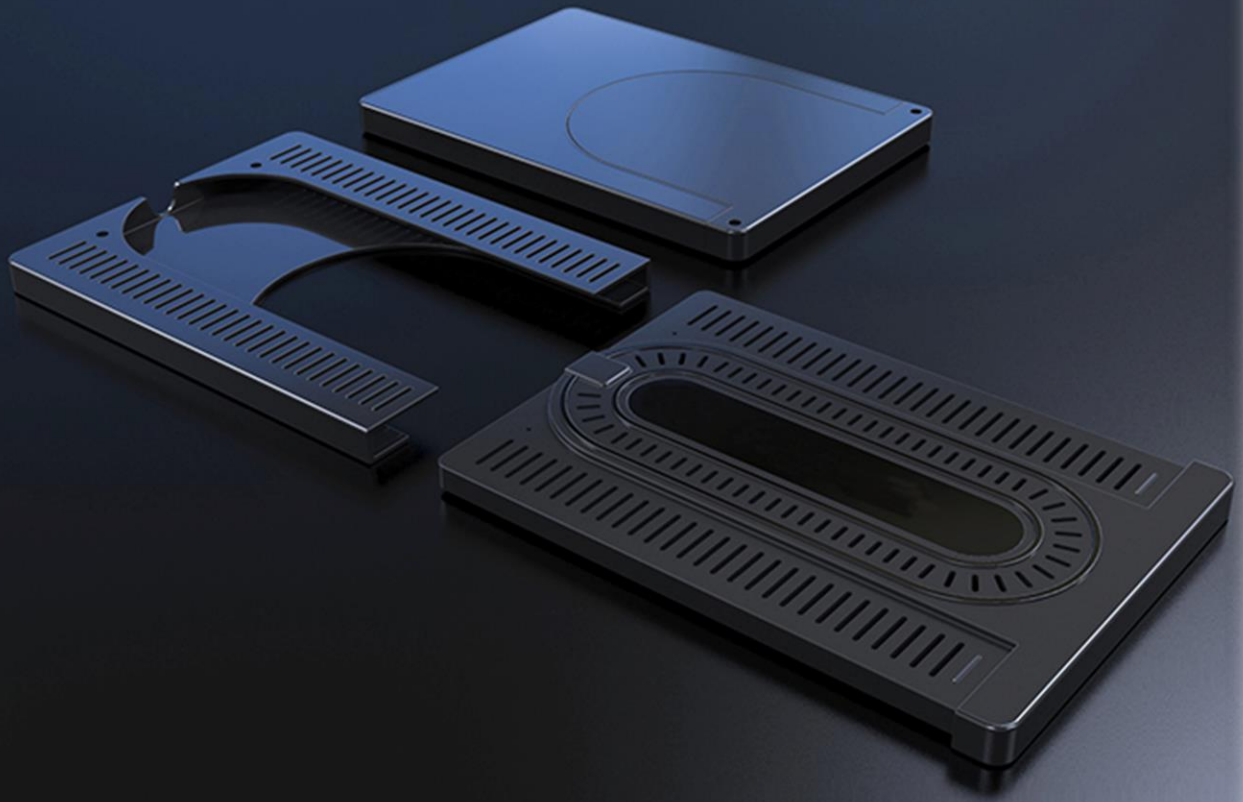




---

# INVISA CHARGE

## WIRELESS CHARGER USER MANUAL



The InvisaCharge product is designed for charging mobile phones through a surface of 15 to 50mm thickness. It is compatible with all Qi standard mobile phones. It can charge through any non-metal surface, such as wood, plastic, glass, porcelain, granite, Dekton, etc. and support fast charging.

**Packing List:**

- 1 Wireless charger x 1
- 2 U-shaped tray x 1
- 3 Power adapter x 1
- 4 Desktop Sticker x 1
- 5 Movable Magnet x 1
- 6 U-shaped cardboard with fixed magnet x 1
- 7 Cable Clips x 3
- 8 Anti theft screws x 2
- 9 Manual x 1



**INSTALLATION STEPS**

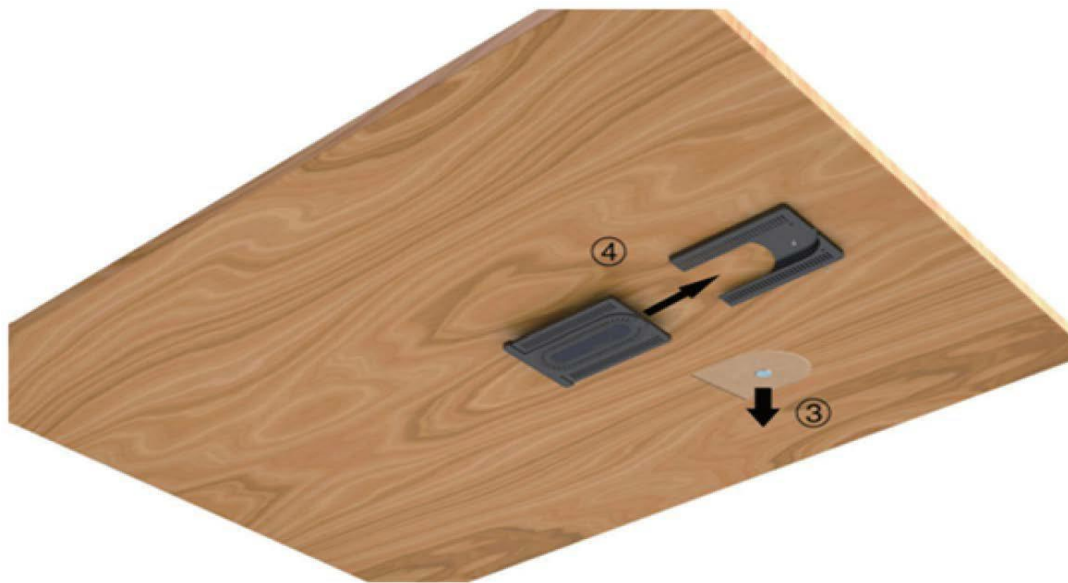
1. Align the center of the desktop sticker with the center of the U-shaped cardboard by using the two magnets.



2. Tear off the paper on the surface of the U-shaped cardboard. Align and stick U-shaped tray to the underside of the countertop



3. Remove the U-Shaped cardboard and insert the wireless Charger into the U-Shaped tray. (*Screws are Optional*)



4. Switch on power and place the mobile phone on the top of the desktop sticker to start wireless charging. (*Cable clips are optional*)



## System Parameters:

1. Model SL019 Wireless Charger
2. Input Voltage/Current: 19V/0.94.A
- 3 Output Power, 10w (Max)
4. Valid Charging Distance: 15mm-50mm
- 5, Color: Black
6. Frame Material: ABS + PC
7. Dimensions: 154mm x 110mm x 10mm

## Tips:

1. The charger will stop automatically when a metal or other foreign object is in the charging area. Remove the object to continue Charging.
- 2.If charging is stopped with unknown reason, just move the mobile phone away and then place it back in the charging area.
3. LED indicator instructions

LED Light	Reason and Indicators
Blue Light Blinking	Standby
Blue Light Always On	Working
Red Light Rapid Blinking	Foreign object detected or Phone is too close to Charger – Min 3mm Distance is required

## NOTES:

- 1.Please install the InvisaCharge according to the instructions to ensure the proper operation of the charger.
- 2.Please do not install on or near a metal desk, near metal rails, or screws in the vicinity of charger.
3. Do not place any metal objects, including ID card, bank card, bus pass and other digital IC cards, in the charging area.
4. To avoid damage, please do not place the device in a wet, hot, or cold environment.
5. Please do not place the device directly under the sunlight or close to any heating equipment, such as a microwave oven, roaster and/or water heater.
- 6.Do not disassemble the device or place it in any liquid to avoid damage and/or electrocution.
- 7.Do not toss, press, or puncture the device. High external pressure will cause damage to the device
8. Please keep the charging area clean for best charging efficiency.
- 9.The device electromagnetic field may interfere with some implanted medical devices, such as pacemaker, cochlear implant and/or hearing-aid. Please consult InvisaCharge manufacturer if you use such implants at [warranty@invisacook.com](mailto:warranty@invisacook.com).
10. Please follow the local recycling guidelines when discarding this product
11. Please keep the device and accessories out of the reach of children.
12. For best performance, please use the accompanied power adapter.